



On Beautiful Horseshoe Bend Parkway
 Your Hosts: *The Gross Family*
 CELEBRATING 29 YEARS 1980-2009

2009 RATES

677 Outer Drive - Lake Ozark, MO 65049
 Phone - (573)365-2634
 Visit us at www.alhonna.com

**Ask about Seasonal & Holiday Specials
 Military, AAA and AARP Discounts Available**

	DAILY RATES			IN SEASON SPECIALS		
	No. Ppl.	Off Season	May 23 to September 6	5 Day Start Sunday	7 Days (except Sat. - Sat.)	Max. Ppl.
One Room Motel Units (do not face lake)						
#33 through 36 - 2 double, shower only, mini fridge & microwave	2	69	77	n/a	n/a	4
#50 through 53 - 2 double full bath, mini fridge & microwave	2	75	n/a	n/a	n/a	4
60M - King, shower only, mini fridge & microwave	2	75	n/a	n/a	n/a	4
C-2nd tier, king, mini fridge, microwave, coffee pot, full bath	2	70	78	n/a	n/a	4
One Room Efficiency Apartments						
#21 through 24 - 1 queen & hideabed, shower only	2	72	85	n/a	n/a	3
One Bedroom Units						
#1, 2, 4, 6 - Cottage with king & daybed, fireplace, private deck	2	88	100-133	543.36	782.08	4
#21/33 through 24/36- 2 rooms, 3 doubles, 2 baths (shower only)	4	141	162	n/a	n/a	6
#42 - King with daybed, shower only	2	82	96-119	504.96	718.16	4
#43 - Loft bedroom one king & twin hideabed, 1 1/2 baths	2	82	96-119	504.96	718.16	3
#63 - One bedroom with 2 double, deck overhangs lake.	2	82	96-119	504.96	718.16	4
A, B - 2nd tier, 1/4 mile from resort. 1 King, daybed.	2	78	83-106	n/a	n/a	4
Two Bedroom Units						
#12, 28, 37 through 40 - 1 king, 1 double & daybed	4	109	131-154	672.96	948.46	6
#15, 16, 18, 19 - King, Dbl & daybed. Larger living area and kitchen	4	131	142-176	746.88	1,062.20	6
#41 - 2 King & daybed, shower only, fireplace	4	131	142-176	746.88	1,062.20	6
#45 - 2 double & 2 daybeds, fireplace, large living area	6	160	170-194	862.08	1,208.84	8
#54, 55 - 2 king & daybed, large living area, condo style	4	134	147-182	772.80	1,098.86	6
#61, 62 - 2 king & daybed, great view	4	142	159-193	828.48	1,174.06	6
#29 through 32 - 2nd tier, king, double & daybed	4	98	110-133	572.16	810.28	6
Three Bedroom Units						
* #5 - 2 story cottage, 2K, 2 dbl & 2 daybeds, 2 bath, fireplace, 2 decks	6	188	218-254	1,115.52	1,569.80	8
* #9, 25 - 3 double & daybed	6	132	158-182	804.48	1,129.88	8
* #10, 11, 26, 27 - King, double, 2 twin & daybed, 2 baths	6	147	170-191	856.32	1,197.56	8
* #14, 17 - King, 2 double, extra twin in lrgst bdrm, daybed, 2 baths	6	166	184-219	950.40	1,342.32	9
* #44 - King, 2 double, 2 daybeds, 2 baths, fireplace	6	182	199-224	1,003.20	1,403.42	10
* #46, 47, 48, 49 - King, Queen, 2 Twins & daybed, 2 baths	6	185	n/a	n/a	n/a	8
* #60 - 3 king, 2 bath, 2 hideabed, tandem bedroom, great view	6	210	232-264	1,175.04	1,646.88	10
* #72, 73 - 3 King, daybed & hideabed, 2 bath, condo style, great view	6	217	237-273	1,206.72	1,694.82	8
Four Bedroom Units						
* #3 - 2 Story Cottage, 2 King, 2Dbl & 2 daybed, 2 baths, fireplace, 2 decks	8	233	264-300	1,336.32	1,872.48	10
* #46/50 through 49/53 - King, queen, 2 twin, 2 double, daybed, 3 bath	8	246	276-302	1,374.72	1,913.84	12
* #70, 71 - 4 King, daybed & hideabed, 3 bath, condo style, great view	8	284	316-354	1,589.76	2,222.16	12
* *Private home. Two story, 2nd tier, located 1/4 mile from resort. 3 Double, King, Queen, 2 full baths, full kitchen, Living room on both floors. Large deck with hot tub.	8	224	242-268	1,211.52	1,690.12	12

Note: On unit with "from and to" rates, the higher rate is charged on Thursday, Friday, Saturday & Sunday nights in season. Military, AAA & AARP Discount available. Please call for details.

EACH ADDITIONAL PERSON \$15.00 PER NIGHT IN ALL UNITS. Children under 6 years of age no charge. The maximum number of people (includes infants and children) may not be exceed for any unit. Porte-cribs \$10.00 per night (please reserve in advance). One boat slip included with each unit. Additional boat slip \$10.00 per night. Pets Accepted. \$9.00 per day and \$25.00 Damage Deposit per pet. Maximum 2 per unit. Pets must be leashed when outside and any pet waste must be picked up from the resort grounds (failure to clean up after your pet will result in loss of pet deposit).

All units except for motels have:
 * BBQ grill & picnic table
 * Basic kitchen supplies

All Units Include:
 Color TV w/ basic cable and
 Telephone* in room (*except 60M)

We provide our guests with
 Towels & linens
NO POOL/BEACH TOWELS ARE SUPPLIED

TWO DAY DEPOSIT IS REQUIRED within one week after making reservations to confirm, and is applied to your reservation. Deposit may be made by credit card or personal check. **Balance Is To Be Paid Upon Arrival. No Refunds Made After Arrival.** Balance due in Travelers Checks, cash, or credit card. All rates subject to state and local tax. A DAMAGE/ CLEANING deposit is required on all units marked with a (*). Alhonna Resort reserves the right to charge a refundable damage deposit on any reservation without prior written notice. The deposit will be refunded within 7 days of departure, assuming no excessive cleaning or damages occurred.

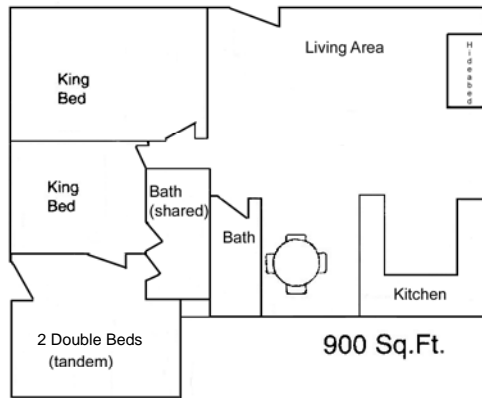
Check-In Time 4:00 P.M. • Check-Out Time 10:00 A.M. (NO EXCEPTIONS JUNE 1 - AUGUST 20)
You are responsible for total days reserved. A 45 day cancellation notice required for deposit refund less \$25.00 cancellation fee.
EARLY CHECK-IN / LATE CHECK-OUT: FIRST HOUR \$75.00 \$50.00 EACH ADDITIONAL HOUR

Daily Fees for Guest not registered at Alhonna Resort

Boat Slip Rental.....	\$10.00	Daily Rate for Pool (per person)	\$5.00
Use of Fishing Dock	\$5.00	Boat Launching Fee (In or Out)	\$7.00

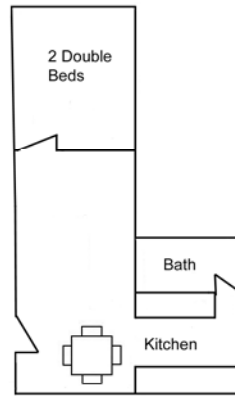
ALL RATES SUBJECT TO CHANGE WITHOUT NOTICE

#60
3 Bedroom Apt.

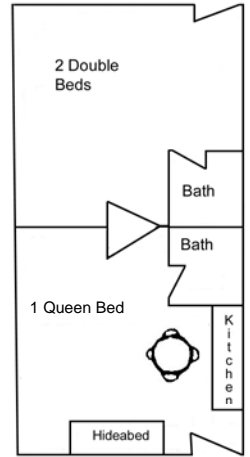


900 Sq.Ft.

#63
1 Bedroom Apt.

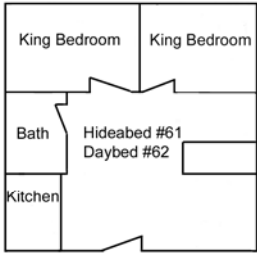


Motel Unit
#33,34,35,36



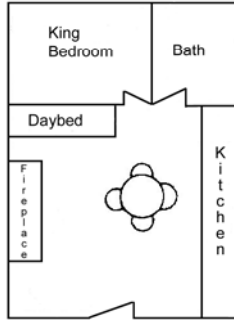
1 Room Apartment
#21,22,23,24
Adjoining Units
450 Sq. Ft. Total

#61,62
2 Bedroom Apt.



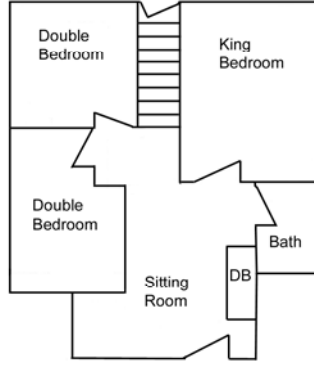
600 Sq.Ft.

1 Bedroom
Lakefront Cottage
#1,2,4,6 (lower 3,5)



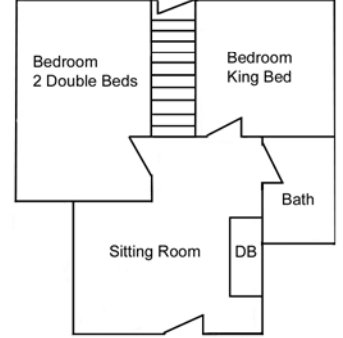
480 Sq.Ft.

4 Bedroom
Lakefront Cottage #3
Upper Level



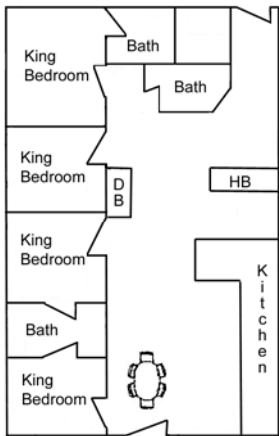
1,236 Sq.Ft.

3 Bedroom
Lakefront Cottage #5
Upper Level



1,044 Sq.Ft.

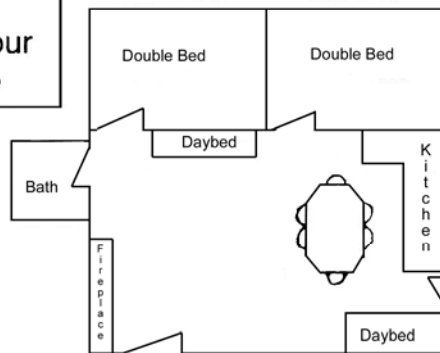
#70,71
4 Bedroom Condo



1500 Sq.Ft.

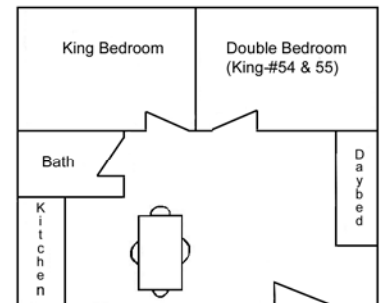
Note: Diagrams are approximations of unit layouts provided for your convenience

2 Bedroom Lakefront Apt. #45



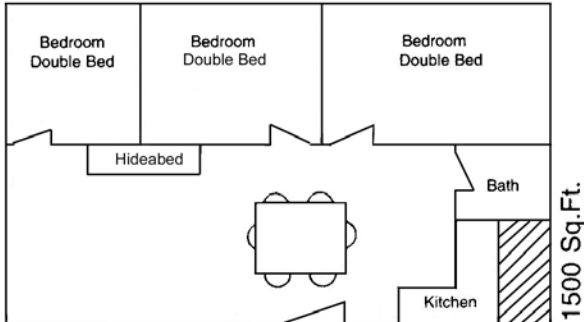
768 Sq.Ft.

2 Bedroom Lakefront Apts.
12, 28, 37, 38, 39, 40
15, 16, 18, 19
2 Bedroom Condos
54, 55



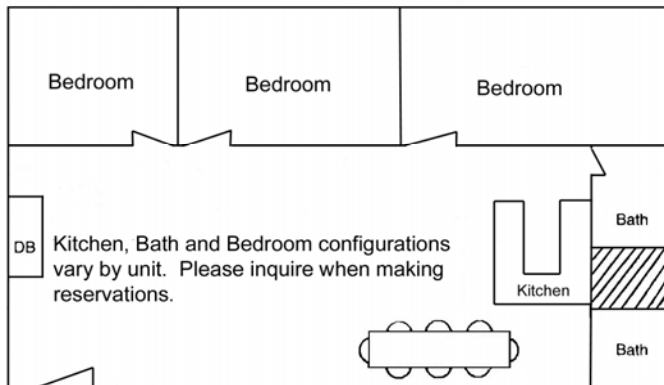
546 - 735 Sq.Ft.

3 Bedroom 1 Bath Apt.
#9,25



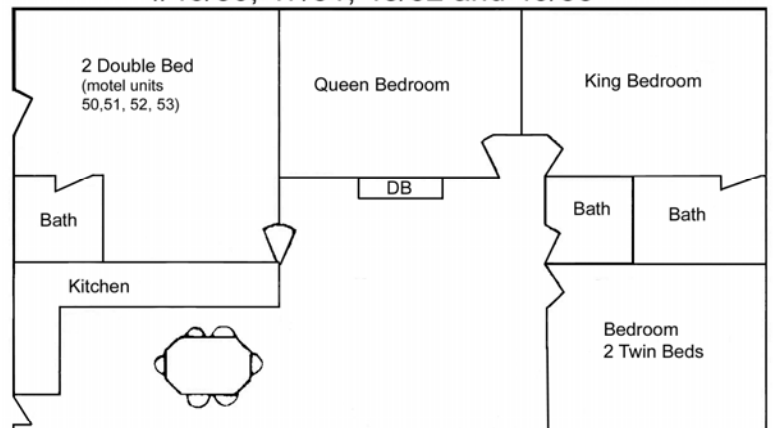
1500 Sq.Ft.

3 Bedroom 2 Bath Apt.
#10,11,14,17,26,27,72,73



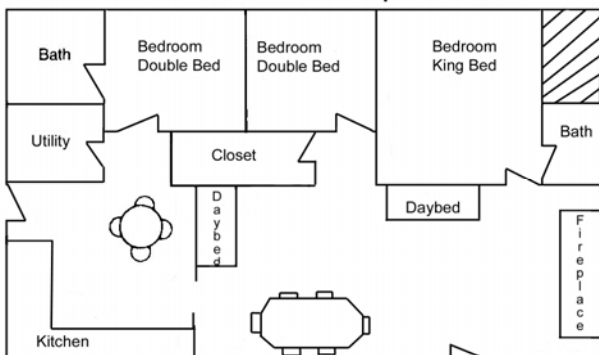
750 - 1,036 Sq. Ft.

4 Bedroom/3 Bath Apartments
#46/50, 47/51, 48/52 and 49/53



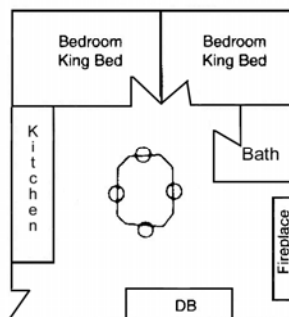
1,120 Sq.Ft.

3 Bedroom/2 Bath Apt. #44



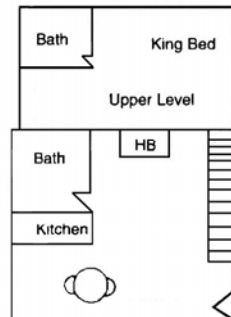
1248 Sq.Ft.

2 Bedroom #41



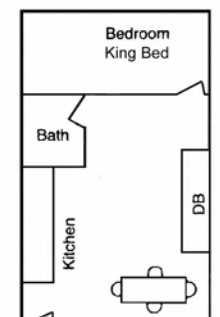
480 Sq.Ft.

1 Bedroom #43



405 Sq.Ft.

1 Bedroom #42



367 Sq.Ft.

Arrangements subject to change.